



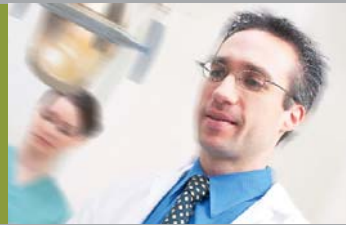
CASE

SCHOOL OF DENTAL MEDICINE

IN PARTNERSHIP WITH THE
SCHOOL OF MEDICINE PRESENTS

THE DENTIST-PHYSICIAN

D.M.D., M.D.



PROGRAM



TRANSFORMING THE ROLE OF THE
DENTAL PROFESSION IN HEALTH CARE

THE DENTIST-PHYSICIAN PROGRAM AT CASE DUAL DEGREE – D.M.D., M.D. PROGRAM

The School of Dental Medicine and School of Medicine at Case Western Reserve University together, wish to create a new, innovative, first-of-its-kind, dual-degree program.

RATIONALE:

The goal of this program is to create the dental health care practitioner of the future, a practitioner with a new skill set that crosses the fields of dentistry and primary care medicine. This new practitioner will be prepared for a broader scope of practice that will be helpful in addressing health promotion and disease prevention as well as access to care issues. The pioneer students in this program will redefine the role of the dental profession in health care delivery. These practitioners of the future will bring a much needed and broader approach to dental health care, linking oral health and general health for the benefit of the individual and the community.



KEY FEATURES OF THIS NEW PROGRAM:

- A joint program between the two professional schools
- Prospective students will need to meet the same level of entrance requirements that currently exist for each school individually
- The program length will be five years
- The home base for this program will be in the School of Dental Medicine
- The dual-degree program will carefully blend the requirements for the two programs to:
 - Create efficiencies where common content exists
 - Assure that students complete the remaining individual program requirements
- The Associate Dean for Education of the School of Dental Medicine and the Vice Dean for Education and Academic Affairs of the School of Medicine will have direct oversight of the program
- The program will contain careful oversight by both schools.
- Upon graduation, students will be qualified:
 - For licensure for the practice of dentistry
 - For postgraduate, year-one residencies in medicine that are required prior to licensure
- Graduates of this new program will be uniquely qualified for:
 - Expanded general practice dentistry that includes selected aspects of primary care medicine
 - Careers in academe
 - Careers that meld oral health and general health concepts
 - Further training in medicine

THE DENTIST-PHYSICIAN PROGRAM AT CASE

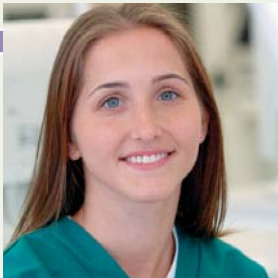
The Schools of Dental Medicine and Medicine of Case Western Reserve University announce an innovative program in health care to train a new cadre of health care leaders for the future.

INNOVATIVE DUAL DEGREE PROGRAM

This groundbreaking educational program will integrate the studies of dentistry and medicine, leading to the dual degrees of Doctor of Dental Medicine and Doctor of Medicine. This leader in health care will be uniquely qualified to serve in a new role as a dental provider whose skills encompass clinical dentistry and primary care medicine. This program and its graduates will redefine the role of the dental profession in health care delivery. The dental practice of the future, by these graduates, will serve the health of patients in the dental office outside the usual boundaries of the dental profession. These practitioners will extend the dentists' commitment to health preservation and disease prevention beyond the oral needs of individuals to their general health needs.

PROGRAM DESCRIPTION

This program encompasses a five-year course of study leading to the joint degrees of D.M.D. and M.D. Case is uniquely positioned to provide this type of integrative program at its health care campus where the Schools of Dental Medicine and Medicine are positioned side-by-side. In 1995, this close relationship facilitated the successful implementation of a joint program in Medicine and Oral & Maxillofacial Surgery. Building on this precedent of health care collaboration and innovation, Case anticipates the launch of this Dentist-Physician dual degree initiative in July 2007.



ENTRANCE REQUIREMENTS

Entrance requirements for this program include the same preprofessional course of study currently followed for entrance into Schools of Dental Medicine and Medicine at Case. A manual dexterity evaluation will be held. The MCAT is required while the DAT is optional. The MCAT should be completed no later than August of the year in which you are applying.

CRITERIA FOR ADMISSION

All applicants are considered regardless of major. Prerequisite courses are as follows:

- 12 semester hours of chemistry, of which 6 hours are organic chemistry;
- 6 semester hours of biology;
- 6 semester hours of physics;
- 6 semester hours of English.

The science courses must include laboratory instruction. Suggested predoctoral science electives include comparative anatomy, cell biology, genetics, biochemistry, microbiology, and physiology.

DENTIST-PHYSICIAN

Experience indicates that students likely to be given first priority are those who have achieved superior grades in the basic sciences and who have taken an adequate sampling of courses in the social sciences and humanities to give them a broad background.

GPA's are not considered the only measure of a student's level of performance in school. Also taken into account is the type of college attended and the relationship between grades obtained and entrance exams scores.

WHO SHOULD APPLY

This program is seeking highly qualified individuals to implement a new vision in dental health care. These pioneers entering this program will be leaders in developing a new discipline of health care delivery in dentistry. We encourage you to identify your strongest candidates for this unique program. Students following preprofessional preparation in either Dentistry or Medicine should explore this unique opportunity.

FOR ADDITIONAL INFORMATION

Preprofessional advisors and students may contact the Office of Graduate Studies at the Case School of Dental Medicine for more information either by phone (216) 368-0775 or email dentalgrad@case.edu



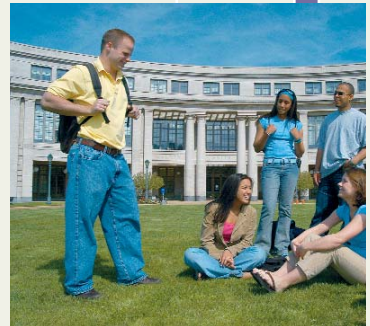
Case Western Reserve University is located in University Circle, Cleveland's cultural center. Home to nearly 50 medical, educational, religious, and social service institutions, Case is the only research-oriented university in its region and has a total enrollment of 10,000 students.

For detailed information on admissions, financial aid and other policies or to request a copy of our Admissions Handbook, please contact:

School of Dental Medicine
Office of Graduate Studies
Case Western Reserve University
10900 Euclid Avenue
Cleveland, OH 44106-4905

Phone (216) 368-0775
<http://dental.case.edu>

The final deadline for applications is November 1st.



D.M.D., M.D. CURRICULUM LAYOUT:

YEAR 1

Integrated Medical
& Dental Training

YEAR 2

Integrated Medical
& Dental Training

YEAR 3

Core Medical
Clerkships &
half-day per week
Dental Clinic

YEAR 4

Dental Clinic &
half-day per week
Clinical Medicine

YEAR 5

Clerkships &
Dental Clinics

D.M.D., M.D. PROGRAM:

	ACADEMIC YEAR								SUMMER			
YEAR 1	Basic Science Instruction											
	Dental Clinical Skills											
YEAR 2	Basic Science Instruction								Board Prep	Dental Clinic	Clerkship	
	Dental Clinical Skills											
YEAR 3	Core Clinical Medicine Clerkships						Research (4 months)					
	Clinical Dentistry											
YEAR 4	Clinical Dentistry								Advanced Core Clerkship		Dental Clinic	
	Clinical Medicine											
YEAR 5	Clinical Dent.	Clinical Dent.	Adv. Core Clerkship	Adv. Core Clerkship	Acting Internship	Acting Internship	Clinical Dent.	Clinical Dent.	Based on two, 16-week semesters plus summer sessions			
			Clinical Dent.	Clinical Dent.								

 SODM: School of Dental Medicine

 SOM: School of Medicine

YEAR 1

The introductory year of the program will feature integrated learning. Students will participate in curricula of both the School of Dental Medicine and the School of Medicine. Basic Science instruction will be taken at the School of Medicine with the exception of the Head and Neck and related Neuroanatomy unit which will be completed at the School of Dental Medicine. Students will be integrated into the dental program for dental clinical skills.

YEAR 2

In the second year, students will continue in an integrated approach to learning both basic science and dental clinical science content while finishing the academic year in the School of Dental Medicine focusing on oral health content and skills.

YEAR 3

The summer prior to year three will serve as the orientation and start of the medical clerkship rotations. This year will be spent focusing on medical skills in the hospital setting during departmental rotations. One afternoon per week will be reserved for clinical dental care throughout the year. Students will complete a project on scholarship during a four-month block of time.

YEAR 4

This year will focus on dental clinical content and skill development while reserving one afternoon per week for clinical medical rotations.

YEAR 5

The final program year is an integrated unit with students spending one-half of the year in clinical dentistry and completing the advanced core clerkship rotations along with an acting internship.

LIFE IN CLEVELAND

You'll find the best of big-city life combined with the easy ambiance of the heartland in Cleveland, bounded by one of the world's largest freshwater lakes on one side and some of America's prettiest countryside on the other.

The city's downtown offers plenty to do. Do you like professional sports? You can follow baseball (Indians), football (Browns), women's football (Fusion) and basketball (Cavaliers).

If you're in search of a good meal or the club scene, you'll find plenty of options in the Warehouse and Gateway districts. Or visit the Rock and Roll Hall of Fame and Museum and the Great Lakes Science Center, which includes an OmniMax® Theater.

Do you enjoy theater? Featuring four magnificently restored theaters, Playhouse Square is the second-largest theater district in the country. The Cleveland Play House, Cleveland Public Theater and Karamu House are among the many other venues presenting noteworthy theater productions.



If you're an outdoor enthusiast, you'll want to head to Cleveland Lakefront State Park, actually several parks that collectively stretch 14 miles along Lake Erie, from the west side of the city to the east, which offer opportunities for hiking, swimming, boating and other water sports. Nature-lovers will find nirvana in the Cleveland Metroparks, with more than 20,000 acres of various landscapes and attractions, Cleveland's park system is one of the largest in the country. Often collectively referred to as the "Emerald Necklace" because the reservations encircle the city of Cleveland, the Metroparks provide more than 60 miles of paved, all-purpose trails for cycling, walking, running and in-line skating; nearly 82 miles of bridle trails; numerous hiking trails with a variety of vistas and terrains; eight physical fitness trails; six public golf courses; and opportunities for winter sports, too.

And then there are the riches of University Circle. Case Western Reserve University's 150-acre campus is located in the University Circle area of Cleveland, a 550-acre, park-like concentration of nearly 50 cultural, medical, educational, religious and social service institutions five miles east of downtown. A partial list of the many institutions located in University Circle includes the Cleveland Museum of Art, the Cleveland Museum of Natural History, Severance Hall (home of the world-renowned Cleveland Orchestra), the Dittrick Medical History Center and Museum, the Cleveland Botanical Garden and the Crawford Auto-Aviation Museum. Many of these institutions offer free or discounted admission for students.

Cleveland has a public transportation system, and the campus is well-positioned for students to take advantage of it, but many students find it helpful to have access to an automobile.



CASE

SCHOOL OF DENTAL MEDICINE

Case Western Reserve University

10900 Euclid Avenue

Cleveland, Ohio 44106-4905

